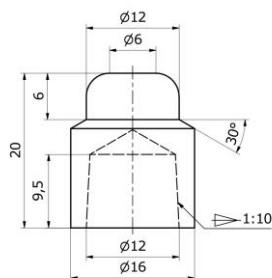
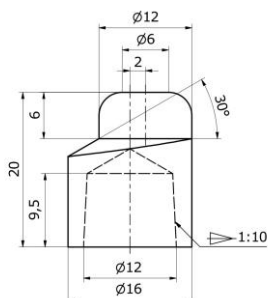


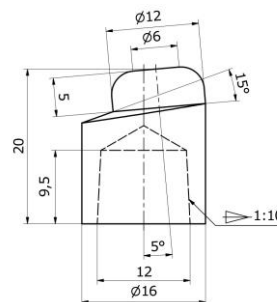
3.9.1



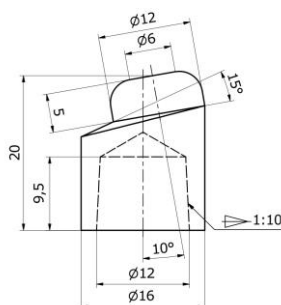
3.9.2



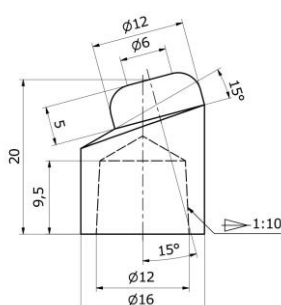
3.9.3



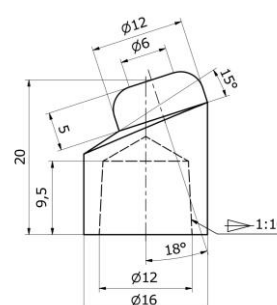
3.9.4



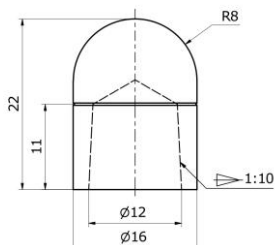
3.9.5



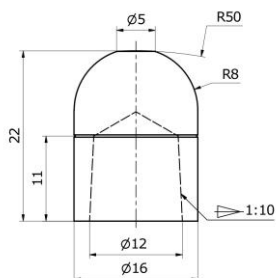
3.9.6



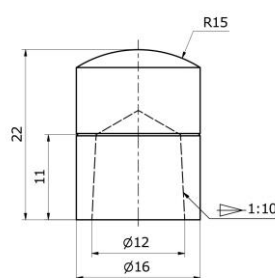
39D 1978/1



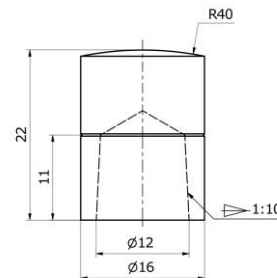
39D 1978/2



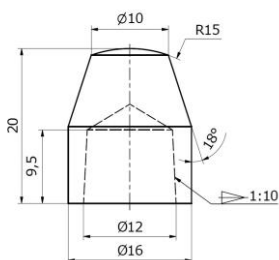
39D 1978/3



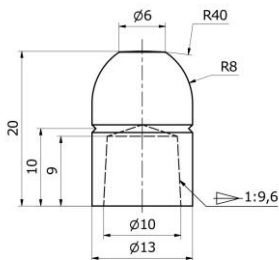
39D 1978/4



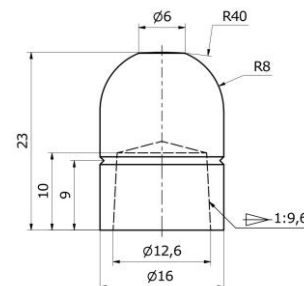
58V 3210P



WCTR 13x6A



WCTR 16x6A



Materiał: CuCr1Zr Powerode Cr+®

Twardość: >160HB

Tolerancja: ISO 2768-m